



PHILADELPHIA

THE PLACE THAT LOVES YOU BACK

You're
going to
Love it
here!



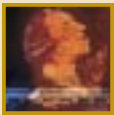
POCKET GUIDE



PHILADELPHIA

is everything you imagine it to be —
and so much more! Philadelphia...

Excites the senses.



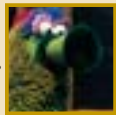
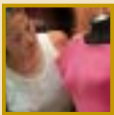
Illuminates history.

Entertains the kids.



Ignites the imagination.

Dazzles the sports fanatic.



Invigorates the shopper.

Surprises the historian.



And **Satisfies** the palate.



Hey, that's just for starters.

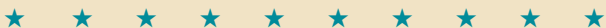
To get going and start planning your great
Philadelphia adventure, visit our website at

www.pcVb.org.

You're going to fall in love with the place that
loves you back.



Look for this symbol throughout this brochure to signify a Philadelphia First!



WELCOME TO THE WONDERS OF THE PHILADELPHIA REGION!



We can't wait to welcome you to Philadelphia! This book provides a glimpse at what makes Philadelphia such a dynamic destination. Although Philadelphia proudly honors our nation's strong heritage, it is by no

means stranded in the past. When you visit this celebrated city, be prepared for more than just a history lesson. What makes Philadelphia and its countryside so special is the unique blend of experiences you have to come here in person to discover: four centuries of history; modern-day neighborhoods; legendary battlefields; cobblestone streets and Colonial architecture; old-fashioned covered bridges; quirky museums; hidden gardens in quaint city enclaves; irresistible nightclubs; bountiful gardens and arboreta; local farmers' markets; upscale shopping, world-class accommodations and, of course, our delicious dining.



When you arrive in Philadelphia, be sure to stop by the Independence Visitor Center at 6th and Market Streets to pick up maps, event information, brochures and a copy of the Philadelphia Official Visitors Guide.

For more information about Philadelphia and the surrounding areas, visit www.pcvb.org or call 1-800-537-7676.



GETTING HERE

GETTING HERE IS EASY. IT'S LEAVING THAT'S HARD!

YOU'LL WANT TO STAY FOR A WHILE.

- ★ We're easily reached by car, train or air, just two minutes from I-95, which runs from points north and south. Or, access the area via the Pennsylvania Turnpike and New Jersey Turnpike.
- ★ We're just 1-1/2 hours from New York; 2-1/2 hours from Washington, D.C.
- ★ **Amtrak Rail Transportation:**
Amtrak operates trains from 30th Street Station with service along the Northeast Corridor and points west and south.

 **AMTRAK**800-USA-RAIL
www.amtrak.com

- ★ **SEPTA Rail Line**

The R-1 connects the airport directly to Center City including the Amtrak Station and Pennsylvania Convention Center. Other SEPTA Regional Rail lines can shuttle you throughout the region.

- ★ **Phlash Downtown Loop**

Transports visitors to many of the city's popular destinations and hotels.

- ★ **Philadelphia International Airport**

.....1-800-PHL-GATE or 215-937-6800
www.phl.org



LOCAL LINGO

We call I-76 the Schuylkill Expressway and refer to I-476 as the Blue Route.

DIRECTIONS TO THE INDEPENDENCE VISITOR CENTER

From the east:

Go over the Walt Whitman Bridge and follow signs to I-95 north. Take exit 22 (on left) for I-676 and follow the signs for Independence Hall onto Callowhill Street. Take Callowhill Street to Sixth Street. Turn left on Sixth Street and travel four blocks.*

From the west:

Take I-76 east to exit 344 for I-676 east. Follow signs for Ben Franklin Bridge. Bear right onto Sixth Street and travel three blocks.*

From the north:

Take I-95 south to exit 22 (Central Philadelphia/I-676) for Independence Hall/Callowhill Street. At the bottom of the exit ramp, turn right onto Callowhill Street and follow to Sixth Street. Turn left on Sixth Street and travel four blocks.*

From the south:

Take I-95 north to exit 22 (Central Philadelphia/I-676) (on left) and follow the signs for Independence Hall onto Callowhill Street. Take Callowhill Street to Sixth Street. Turn left on Sixth Street and travel four blocks.*

* The Visitor Center is located on Sixth Street, between Arch and Market Streets, on the left.

DIRECTIONS TO THE PENNSYLVANIA CONVENTION CENTER

From the east:

Take I-676 west over the Benjamin Franklin Bridge and follow signs to Rte. 611/PA Convention Center onto Vine Street. Turn left onto 12th Street.*

From the west:

Take I-76 east to exit 344 (I-676 east). Follow signs for Central Philadelphia. Take the second exit (Broad Street/Route 611) onto Vine Street. Follow signs for Vine Street/PA Convention Center; at the fourth traffic light, turn right onto 12th Street.*

From the north:

Take I-95 south to exit 22 (Central Philadelphia/I-676). Take I-676 west to the first exit (Broad Street). Follow exit ramp onto 15th Street. Turn left at the second traffic light onto Vine Street and stay to the right following signs for Vine Street/PA Convention Center. Turn right onto 12th Street.*

From the south:

Take I-95 north to exit 22 (Central Philadelphia/I-676) (left exit). Take I-676 west to the first exit (Broad Street). Follow exit ramp onto 15th Street. Turn left at the second traffic light onto Vine Street and stay to the right following signs for Vine Street/PA Convention Center. Turn right on to 12th Street.*

* The entrance to the Convention Center is located two blocks ahead at 12th and Arch Streets.

For more information on traveling to Philadelphia, visit the maps/directions section of our Web site at www.pcvb.org.

OVERVIEW OF PHILADELPHIA

Ok, let's start with the basics.

The city of Philadelphia is the fifth largest in the United States and the largest in Pennsylvania, with approximately 1.5 million people. About one-third of our nation's population is within a five-hour drive of our region.

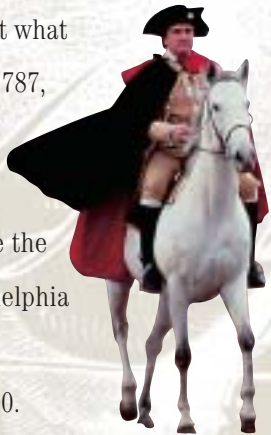


William Penn founded our city way back in 1682.



(Look for Penn atop City Hall.) During the American Revolution, the fight for freedom took hold here at Carpenters' Hall in 1774, site of **the First Continental Congress**. In July 1776,

independence rang out with the signing of the Declaration of Independence (at what is now Independence Hall). In 1787, our nation's founders came to Philadelphia for the Constitutional Convention. Once the Constitution was written, Philadelphia served as the capital city of the new nation from 1790 to 1800.



WE'RE A HISTORIC TOWN IN A BIG CITY

Philadelphia and its surrounding counties may be the best living textbook available for understanding the history of our nation.

Why do we think so?

The roots of American democracy are found in Philadelphia: The Declaration of Independence and the Constitution were not just drafted here by accident. Instead, they stand as the most recognized symbols of the American Enlightenment, which had its roots in Philadelphia 100 years before 1776. When the aristocratic William Penn

decided in 1682 to apply his Quaker ideals of racial harmony and religious tolerance to the colony, he set into motion forces that would produce the America we recognize today. By opening the floodgates of immigration, regardless of creed, Pennsylvania became, in effect, America's first multicultural society. Penn's great holy experiment generated numerous mini-

experiments, still visible in the stone farmhouses of Welsh Quaker and German Mennonite families scattered across the fertile countryside in Bucks County and beyond. By connecting this patchwork of agricultural communities to the global economy of the 18th century, Philadelphia quickly became the busiest port in all the colonies. With such a thriving economy, radically diverse populations, and central location, it should come as no surprise that the contrasting colonies united at



Valley Forge National Park



OVERVIEW OF PHILADELPHIA

Philadelphia to plot a revolution. Penn's "city of brotherly love" would become the model for their new nation.

The same unique factors that attracted trade, immigrants, and ideas also lured invading armies; thus, crucial battles of the Revolutionary War were waged here. You can still trace the campaign for Philadelphia across the region, where Sir William Howe pressed toward the rebel capital in the fall of 1777. The first major clash came in September at the Brandywine River, 20 miles south of the city. Then in October, the two armies engaged in brutal house-to-house fighting with George Washington's surprise attack in Germantown, just outside Philadelphia. Meanwhile, rebels harried the British fleet from Fort Mifflin on the Delaware, in one of the heaviest artillery bombardments in history. The British ultimately captured Philadelphia, and Washington pulled back to spend the winter revamping his army at Valley Forge.

Of course, history did not end in 1776, and there is much to discover beyond the American Revolution. In the 19th century,

Penn's "city of brotherly love" would become the model for their new nation.

Philadelphia continued to be the nation's center of culture, attracting writers like Edgar Allen Poe. It was also home to the nation's largest free African American population by 1790, and this vibrant community built many of the earliest black cultural institutions, including the first A.M.E. church and a network of Underground Railroad stations extending out into the countryside. After the Civil War, the Underground



Railroad gave way to the great iron rail network that radiated from Philadelphia — the undisputed center of America’s industrial revolution. You can still trace the course of America’s urban expansion by starting



at the Reading Railroad Terminal (a monument to this country’s first billion-dollar industry!), sampling the delicious diversity of a market which owes its very existence to the trains that knitted together the hinterland with urban consumers. Then follow those same rails in the opposite direction, along the old lines which spurred wealthy industrialists like Baldwin and Lippincott to build palatial suburban mansions.

In short, if you want to understand how America evolved into the nation that it is, take a look at Philadelphia!



PHILADELPHIA ALL YEAR-ROUND

Our region is exciting in every season with special events and festivals. Whether you’re into gardening, parades, jazz, fireworks, history or cycling, you’ll find unique events that will add something special to your visit. Visit the calendar of events section of www.pcvb.org for detailed information.



PHILADELPHIA'S NEIGHBORHOODS

MAKE OUR PHILADELPHIA YOUR PHILADELPHIA

RITTENHOUSE SQUARE:

See and be seen along the posh boutiques, restaurants and outdoor cafes of Rittenhouse Row. If you bring your dog, he'll have great company in the Square.

OLD CITY:

Historic charm mixes with urban chic in this gallery, shopping and dining district. The First Friday evening of every month is a gallery "happening."

CHINATOWN:

The Friendship Gate at 10th and Arch Streets welcomes you to the Chinese culture and culinary delights of this ethnic mecca with over 100 restaurants and stores featuring food from every Chinese province; plus Malaysian, Vietnamese, Thai and Korean.



CHESTNUT HILL:

Cobblestone-lined streets and magnificent homes grace this quaint village of shops, galleries and restaurants.



AND COUNTRYSIDE

MANAYUNK:

A two-mile long section of Main Street with cutting-edge upscale boutiques, restaurants, cafes and galleries.



SOUTH STREET:

There's something for everyone along South Street, where punk and funk go right along with more than 300 eclectic shops and restaurants.

UNIVERSITY CITY:

Home to the University of Pennsylvania and

Drexel University. An exciting environment including bookstores, museums, restaurants, theaters, coffeehouses and more.



BENJAMIN FRANKLIN PARKWAY:

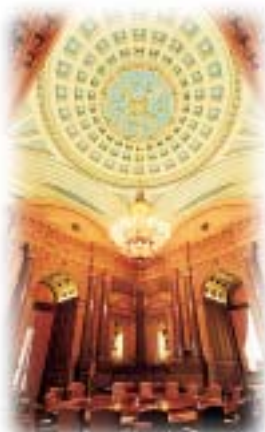
Within a walkable mile of City Hall, you'll find glorious fountains and a vast array of museums and libraries, all ending with the Philadelphia Museum of Art and those famous "Rocky steps."



PHILADELPHIA'S NEIGHBORHOODS

AVENUE OF THE ARTS:

In the heart of downtown Philadelphia, with City Hall in the center, the Avenue of the Arts (Broad Street) is the performing arts district which includes theaters, museums, concert halls, schools, universities and the new Kimmel Center for the Performing Arts.



SOUTH PHILADELPHIA:

This tightly knit neighborhood is home to some of Philadelphia's best Italian restaurants, the outdoor Italian Market, authentic Philly cheesesteaks and the Mummers Museum.



DELAWARE RIVER WATERFRONT:

Colombus Boulevard, which parallels the river, offers year-round concerts, festivals, sightseeing, dining and nightlife.



PHILADELPHIA COUNTRYSIDE

BRANDYWINE VALLEY:

Home to spectacular Longwood Gardens and the Brandywine River Museum (famous for its Wyeth paintings); charming bed and breakfasts abound.

NEW HOPE/ PEDDLER'S VILLAGE:

Escape to the country, less than one hour from Center City. Enjoy parks, covered bridges, canoeing and tubing down the Delaware River, antique and funky shopping, restaurants, cafes, and bed and breakfasts.



VALLEY FORGE:

One of our region's most historic areas, Valley Forge is famous as General George Washington's encampment. See Washington's

headquarters and the troops' log cabins.

Nearby is the nation's largest retail mall, King of Prussia Mall.



TOURING

We've given you some tips so you can easily see many of our region's highlights. Make sure you book an extra night!

To best see Center City Philadelphia, we've used the grid plan set by our founder William Penn who arranged the city into five main squares: Penn (originally Centre), Washington, Rittenhouse, Logan and Franklin. See our map in the back cover for an overview.

DETAILS ARE THROUGHOUT THE BOOK. THE FOLLOWING ARE HIGHLIGHTS ONLY!

PENN SQUARE

City Hall fills the Square. Start here and see....

- ★ City Hall itself (tour)
- ★ Reading Terminal Market (must taste: sticky buns, soft pretzels, and so much more).

Note: The Amish are here Wednesday through Sunday.

- ★ Chinatown (great food and the great arch)
- ★ Pennsylvania Convention Center (don't miss the art collection)
- ★ Pennsylvania Academy of the Fine Arts
- ★ Masonic Temple
- ★ The Gallery at Market East (shopping mall)
- ★ SEPTA Museum (for the train buff)
- ★ Hard Rock Cafe

WASHINGTON SQUARE

A short walk to the Independence Visitor Center (pick up your Philadelphia Official Visitors Guide). Start here and see...

- ★ Historic Philadelphia (Liberty Bell, Independence Hall, Betsy Ross House, Franklin Court)
- ★ The Bourse (shopping mall)
- ★ The African American Museum in Philadelphia
- ★ National Museum of American Jewish History
- ★ U.S. Mint
- ★ Balch Institute of Ethnic Studies
- ★ Atwater Kent Museum
- ★ Old City (galleries, ethnic restaurants, shopping)
- ★ National Liberty Museum



Claes Oldenburg's Clothespin



The Bourse

- ★ Lights of Liberty Show
- ★ Waterfront: Battleship New Jersey Museum, Independence Seaport Museum, Olympia, Becuna, RiverLink ferry to New Jersey State Aquarium
- ★ Jewelers' Row
- ★ Explore Society Hill for hidden paths, cobblestone streets, parks, historic homes, trinity houses (3-story, 3-room houses)
- ★ South Street



Lights of Liberty Show



Dining alfresco on Rittenhouse Square

RITTENHOUSE SQUARE

Start at the Square and...

- ★ Shop (Liberty Place, The Bellevue, and shops along Rittenhouse Row)
- ★ Dine in outdoor cafes
- ★ Explore the Rosenbach Museum and historic homes on Delancey Street
- ★ Tour the Civil War Library & Museum
- ★ Listen to a concert at the Curtis Institute
- ★ Walk over the Walnut Street bridge into University City, where you'll find the University of Pennsylvania Museum of Archaeology and Anthropology, Institute of Contemporary Art, etc.

LOGAN SQUARE

Start at the beautiful Swann Fountain and see...

- ★ The Academy of Natural Sciences
- ★ The Franklin Institute Science Museum (check out the First Union Science Park behind the museum)
- ★ Rodin Museum
- ★ Free Library of Philadelphia (don't miss the rare book collection)
- ★ Please Touch® Museum
- ★ Philadelphia Museum of Art
- ★ Eastern State Penitentiary
- ★ LOVE Statue in LOVE Park
- ★ Head West: Fairmount Park with beautiful drives, Fairmount Park Mansions, Japanese House & Garden, Boathouse Row (lit up in splendor in the evenings) and Water Works, Azalea Garden

PENNSYLVANIA CONVENTION



Coming to town for a meeting or convention? Lucky you.

You are headed to one of the country's premier convention destinations which boasts some of the best facilities and service in the country.

PENNSYLVANIA CONVENTION CENTER

Magnificent architecture, an extensive art collection, natural light and carefully conceived space set the Pennsylvania Convention Center apart. The finest facility of its kind, the Center covers six downtown city blocks and is central to entertainment, shopping, historical, business and cultural districts. The Center is connected indoors to a Hard Rock Cafe, microbrewery, Kinko's and Philadelphia Marriott Hotel, as well as the venerable Reading Terminal Farmers' Market, The Gallery — the nation's largest city shopping mall, and a regional rail station which provides direct service to Amtrak and Philadelphia International Airport.

The Center features more than 440,000 square feet of exhibit space, a 32,000 square foot ballroom, the 30,000 square foot Grand Hall, and 52 meeting rooms with an additional 90,000 square feet, totaling 592,000 square feet of function space.

NEXT GENERATION TECHNOLOGY

No other convention center is as technologically responsive to tomorrow's information needs. From fiber optic and copper networks, to video conferencing and high-speed Internet connections, convention delegates will find their event fully-wired.

SERVICE, SERVICE, SERVICE

Did we mention service? When visitors are in town for business or leisure, Philadelphians live up to the city's "loves you back" reputation. From florists and limousines, to caterers and rental services, you will find everything you need. Our tour companies will show you the town on foot or by motorcoach, trolley, horse and carriage, boat, bike...even helicopter! Philadelphia's restaurants will make your taste buds smile and keep you in town an extra day just for dessert. And you'll find the best convention parties and receptions at the city's unique and exotic venues. By the time business is complete, you will be planning your return trip to Philadelphia with the entire family!



The Pennsylvania Convention Center is located on Arch Street between 11th and 13th Streets with entrances at 12th and Arch Streets. The R1 rail line takes you from Philadelphia International Airport or Amtrak's 30th Street Station directly into the Center. For more information call 215-418-4700 or visit www.pcvb.org.

IT'S LIKE VISITING ANOTHER

...WITH A FEW KEY IMPROVEMENTS

AMERICA'S MOST HISTORIC SQUARE MILE

One of the best ways to begin your trip in Philadelphia is with a walking tour of America's Most

Historic Square Mile. Here,

at **Independence National**

Historical Park, you'll

discover more than a

dozen of the nation's most

important historic sites and

attractions celebrating

American freedom.

Begin at the **Independence
Visitor Center** at 6th and Market

Streets. View the movie

Independence to put you in a

revolutionary state of mind. Be

sure to ask a park ranger or guide

to plan out a route through the

park — then you're on your way!

First stop: the **Liberty Bell** for

an up-close look at the world's

most famous symbol of freedom.

Walk across the lawn to

Independence Hall, the

birthplace of our nation, the site

where the Declaration of

Independence was penned and

signed and the U.S. Constitution

was written. A new exhibit

features original copies of the

Declaration of Independence, the

United States Constitution and

the Articles of Confederation. This

"Great Essentials" exhibit is

displayed in the West Wing of

Independence Hall and includes

the Philip Syng inkstand, which

was believed to have been used

for the original signings. Next

door, in **Congress Hall**,

the U.S. Senate and U.S. House

of Representatives met from

Independence Hall

CENTURY...

1790 to 1800, when Philadelphia was the nation's capital. Nearby stands **Old City Hall**, home of the U.S. Supreme Court from 1791-1800.

From there, walk to the **Second Bank of the United States**. This Greek-revival-style building contains portraits of famous Americans and foreigners — all the great names from the last 25 years of the 18th century. Just down the street is the **New Hall Military Museum**, a reconstruction of the 1790 building that served as headquarters for the U.S. Department of War from 1791-1792.

Today, it houses a commemoration of the early history of the U.S. armed forces. Stop by **Carpenters' Hall**, where the First Continental Congress met.

Although Ben Franklin's house no longer stands, you can still see the place where it once stood at **Franklin Court**. Here, the Robert Venturi-designed "Ghost House"

depicts Franklin's house and printing shop, plus an underground museum.

At the end of cobblestone-lined **Church Street** is **Christ Church**, an active Episcopal parish since 1695, and the place where Benjamin Franklin, George Washington and Betsy Ross worshipped.

Step outside to the **Christ Church Burial Ground** where more Colonial and Revolutionary War leaders are buried than any other nonmilitary cemetery in the U.S.



IT'S LIKE VISITING ANOTHER

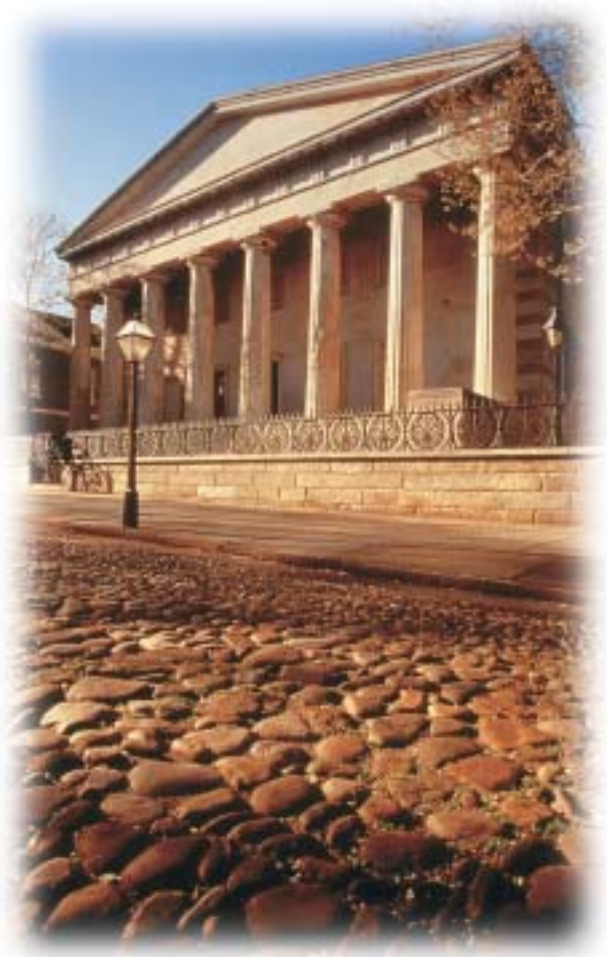
...WITH A FEW KEY IMPROVEMENTS

Check out two of the many historic homes in the city at the **Bishop White House**, home of Pennsylvania's first Episcopal bishop, built during 1786-1787, and the **Thaddeus Kosciuszko National Memorial**, the former

home and tribute to the Revolutionary war patriot.

At the **Graff House** (Declaration House), see a reconstruction of the house where Thomas Jefferson lived during the time he wrote the Declaration of Independence.

Second Bank of the United States



INDEPENDENCE NATIONAL HISTORICAL PARK

INDEPENDENCE VISITOR CENTER

215-965-7676

6th and Market Streets

LIBERTY BELL PAVILION

On Market Street, between 5th and 6th Streets

INDEPENDENCE HALL

On Chestnut Street, between 5th and 6th Streets

CONGRESS HALL

6th and Chestnut Streets

OLD CITY HALL

5th and Chestnut Streets

SECOND BANK OF THE UNITED STATES

Chestnut Street between 4th and 5th Streets

NEW HALL MILITARY MUSEUM

Chestnut Street between 3rd and 4th Streets

CARPENTERS' HALL

322 Chestnut Street

FRANKLIN COURT and B. FREE

FRANKLIN POST OFFICE

Reachable from Market Street between 3rd and 4th Streets

CHRIST CHURCH215-922-1695

2nd Street above Market Street

GRAFF HOUSE

(DECLARATION HOUSE)

7th and Market Streets

BISHOP WHITE HOUSE

309 Walnut Street

THADDEUS KOSCIUSZKO

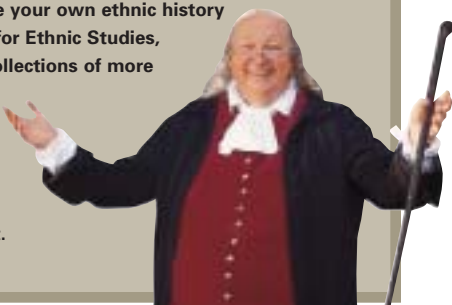
NATIONAL MEMORIAL

301 Pine Street

PHILADELPHIA'S CULTURAL HERITAGE

People from all walks of life start their journey somewhere. Many of those pathways can be found right here in Philadelphia. Six blocks from the Visitor Center you'll find a statue of tribute to the Lenape Indians — Native Americans who originally occupied this region. A few steps south, you'll find the oldest parcel of land continuously owned by African Americans in the country, upon which Mother Bethel A.M.E. still stands.

You can even trace your own ethnic history at the Balch Institute for Ethnic Studies, where displays and collections of more than 80 ethnic groups can be found. Sample the rich heritage that makes Philadelphia such a unique place to visit.



MUSEUMS AND ATTRACTIONS

YOU COULD PLAN YOUR ENTIRE PHILADELPHIA VISIT AROUND OUR INCREDIBLE MUSEUMS AND CULTURAL ATTRACTIONS.

LET'S START WITH ART!

The Philadelphia Museum of Art, with its permanent and special collections, showcases some of the world's most legendary paintings, sculptures, and decorative and architectural arts. Also on permanent display are such notable collections as Arms and Armor, Costumes and Textiles, and Indian and Himalayan Art.

26th Street and the Benjamin Franklin Parkway (closed on Mondays); Philadelphia Museum of Art215-763-8100

Across the Parkway, the **Rodin Museum** houses the largest collection of Rodin sculptures outside of Paris. **22nd and the Parkway (closed Mondays); Rodin Museum.....215-763-8100.**



Philadelphia Museum of Art

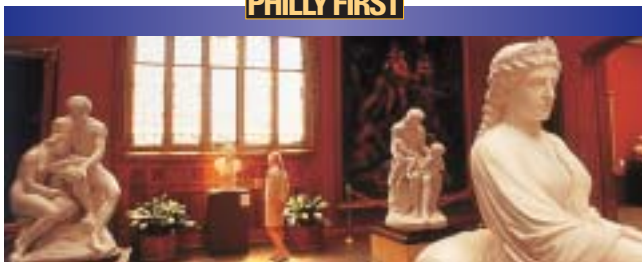
If new is your thing, the **Institute of Contemporary Art** at the University of Pennsylvania is your destination, with changing exhibits in multimedia.

36th and Sansom Streets215-898-7108

Discover Magazine called **The University of Pennsylvania Museum of Archaeology and**



PHILLY FIRST



Discover the nation's first art museum, The Pennsylvania Academy of the Fine Arts. (Also home of the first and still thriving American Art school.) Where greats including Delacroix and Hicks studied. Broad and Cherry Streets; 215-972-2060.



Anthropology one of the “10 great” science museums. A world of ancient artifacts includes a 12-ton sphinx and materials from ancient Egypt, Mesopotamia, Mesoamerica, Asia and The Greco-Roman cultures.

**33rd and Spruce Streets;
University of Pennsylvania
Museum215-898-4000**

The great artists of tomorrow can be found at **The University of the Arts**, the nation’s only university devoted exclusively to education and training in design, media, and the visual and performing arts. Student shows and exhibits run throughout the year. **320 S. Broad Street;**

.....800-616-ARTS

The works of famous Philadelphians such as Thomas Pollock, Benjamin West and Sam Maitin grace **The Woodmere Art Museum**, a 19th-century stone mansion in Germantown.

**9201 Germantown Avenue
.....215-247-0476**

Minutes away, in Merion, is the **Barnes Foundation**, one of the greatest private collections of impressionist art in the world. Included are 180 Renoirs, 69 Cézannes, 60 Matisse and a significant collection of African sculpture and Native American art. Limited admission. Call in advance. **300 N. Latches Lane, Merion610-667-0290**



James A. Michener Art Museum

Head to Doylestown’s **James A. Michener Art Museum** for a look at works by the region’s famed 19th- and 20th-century artists.

**138 S. Pine Street, Doylestown
215-340-9800**

American Art at its best at the **Brandywine River Museum**, renowned for its collection of works by three generations of Wyeths, including Jamie Wyeth’s “Portrait of A Pig,” Andrew Wyeth’s “Snow Hill,” and N.C. Wyeth’s “Treasure Island.”

**Routes 1 and 100, Chaddsford
.....610-388-2700**

Winterthur Museum, Garden & Library offers the largest and finest collection of decorative arts and furniture made or used in America from 1640-1840. **Route 52, Winterthur, DE**

.....800-448-3883

SPECIAL-INTEREST MUSEUMS

Climb aboard Olympia, Admiral Dewey’s 1898 flagship at the Battle of the Manila Bay, or Becuna, a WWII submarine, at the

MUSEUMS AND ATTRACTIONS



Independence Seaport Museum

Independence Seaport Museum, to see how sailors lived way back then. Look for the original first-class passenger list from the Titanic — one of only three that still exists today. **211 Columbus Blvd. at Walnut Street**

.....**215-925-5439**

For a look at rare books, manuscripts and art, the **Rosenbach Museum**, housed in a splendid 19th-century townhouse, exhibits original works by Maurice Sendak and the original manuscript of James Joyce's *Ulysses*. **2010 Delancy Place**

215-732-1600

The new **National Liberty Museum** is a tribute and salute to the heroes and events that have inspired non-violence, freedom and human rights around the world. This interactive experience invites children and adults to partake in a variety of eye-opening activities and exhibits. Kids will adore the giant sculpture called "The Jellybean People", while grown-ups marvel at the breathtaking, 20-foot-high red glass "Flame of Liberty" sculpture. **321 Chestnut Street**

.....**215-925-2800**

America's oldest charter Civil War institution, **The Civil War Library and Museum** contains three floors of exhibits including uniforms, flags, weapons, art and artifacts. **1805 Pine Street**

.....**215-735-8196**

Antique fire engines and equipment highlight the **Fireman's Hall Museum**, a restored fire station that was in service from 1902-1952. **147 N. Second Street**

215-923-1438

Uncover medical marvels and mysteries dating from 1750 at **The Mütter Museum at the College of Physicians of Philadelphia**. **19 S. 22nd Street** **215-563-3737**

Find out why Philadelphia men dress up in feathers and sequins every New Year's Day at the **Mummers Museum**. The 100-year tradition is explained through interactive exhibits, a costume gallery and performance space. **100 S. 2nd Street..215-336-3050**

The **Mercer Museum** displays Henry Mercer's collection of folk art, furnishings and implements of early Americana. **84 S. Pine Street, Doylestown**

.....**215-345-0210**

Flight fans won't want to miss the **American Helicopter Museum and Education Center**, where more than 30 helicopters, vintage aircraft and interactive displays tell the story of the rotor wing industry. **1220 American Blvd., West Chester.....610-436-9600**





Mercer Museum

MAJOR SCIENCE MUSEUMS

The Franklin Institute Science Museum (possibly the “coolest” museum in the world) turns science into a hands-on, interactive adventure with a walk-through giant human heart and a “trip” on an airplane, plus plenty of techno exhibits and demonstrations. Check out the Wright Brothers’ original hand drawings for their 1903 flyer. IMAX films shown on a regular basis.

20th Street and Benjamin Franklin Pkwy.....215-448-1200

At **The Academy of Natural Sciences**, look up to Tyrannosaurus Rex and Gigantosaurus, or dig for real fossils in the Paleontology lab. Check out the teenage Egyptian mummy discovered hidden in an unmarked crate in 1977. **1900 Benjamin Franklin Parkway215-299-1000**

CITY SPECIALTIES

Best known as Philadelphia’s history museum, the **Atwater Kent Museum** traces the city’s development over 300 years and interprets the history through exhibits which include more than 40,000 objects. The museum is also home to a complete collection of Norman Rockwell covers for *The Saturday Evening Post*, originally published in Philadelphia. **15 S. Seventh Street215-685-4830**

Philadelphia’s own **City Hall**, completed in 1901, is the largest city hall in the country, with over hundreds of sculptures including the lighted statue of William Penn by Alexander Calder atop the 548-foot tower. Take a tour and go to the top for a tremendous view.

Broad and Market Streets215-686-2840

HERITAGE MUSEUMS

A melting pot of people, cultures, religions and ethnicities, our city is a reflection of the world around us. Looking for your roots? Do a little research into your family history at



The Franklin Institute Science Museum

MUSEUMS AND ATTRACTIONS



City Hall

some of these incredible museums. Check out the section on Historic Homes for some other interesting recommendations.

One of America's leading institutions for multi-cultural study and immigration history, **The Balch Institute for Ethnic Studies** displays exhibits and collections of more than 80 ethnic groups. **8 S. 7th Street**

.....**215-925-8090**

The first museum of its kind in America, **The African American Museum** is home to one of the country's finest collections of priceless African American art, artifacts and culture. **701 Arch Street**

215-574-0380
Mother Bethel African Methodist Episcopal Church,

founded in 1787, is the first A.M.E. church in America owned and operated by African Americans. **6th and Lombard Streets**

.....**215-925-0616**

A place to discover the Polish culture, history and art, the **Polish American Cultural Center** displays paintings, photos and exhibits. **308 Walnut Street**

.....**215-922-1700**

The American Swedish Historical Museum, built in

1653 by settlers as a Swedish-style manor house, features 14 galleries commemorating the arts, artifacts and contributions of the Swedish people. **1900 Pattison Avenue**

215-389-1776
Home of the Grand Lodge of Free and Accepted Masons of Pennsylvania, the **Masonic Temple** now houses the Masonic Library and Museum of Pennsylvania and features rare treasures and books. Guided tours only. **1 N. Broad Street**

.....**215-988-1917**

Explore the evolution of Jewish identity in America at the **National Museum of American Jewish History**, dedicated to the American Jewish experience as a religion and a culture. **55 N. 5th Street**.....

215-923-3811

FOR THE KIDS

FUN FOR EVERYONE

PHILADELPHIA ZOO215-243-1100
 3400 W. Girard Avenue
**NEW JERSEY STATE AQUARIUM
 AND CHILDREN'S GARDEN**
800-616-JAWS
 1 Riverside Drive, Camden, NJ
BLUE CROSS RIVERRINK (SEASONAL)
215-925-RINK

NEW HOPE & IVYLAND RAILROAD:
215-862-2332
 32 W. Bridge Street, New Hope
PEDDLER'S VILLAGE CAROUSEL
215-794-4000
 Routes 202 & 263, Lahaska
NEW HOPE CANAL BOAT COMPANY
215-862-0758
 149 Main Street, New Hope

GET CITYPASS, SAVE MONEY AND AVOID THE LINES!



This pay-one-price ticket includes a trolley tour of the city and a day's admission to **The Franklin Institute Science Museum, the Philadelphia Zoo, The Academy of Natural Sciences** and **the Independence Seaport Museum**. Good for nine full days from the date of purchase, the pass costs \$30.00 for adults, and \$18.00 for kids 3-11. Purchase **CityPass** at the **Independence Visitor Center** (6th & Market Streets), at any one of the attractions, or in advance at www.citypass.net.



Sesame Place®

For "fun for the very young," take the little tykes (ages 7 and under) to the **Please Touch Museum®**, where reaching out is always encouraged. Big Bird and friends make their East Coast home at **Sesame Place®**, the nation's only theme park based on Sesame Street characters. Be prepared to get wet on the water rides and to scream on the roller coaster.

Please Touch Museum® 210 N. 21st Street215-963-0667
Sesame Place® 100 Sesame Road, Langhorne215-752-7070

HOME AWAY FROM HOME



From luxury high-rise accommodations to quaint bed and breakfasts, your overnight stay in Philadelphia will be a real getaway. Greater Philadelphia offers more than 17,000 hotel rooms — including 10,000 rooms in Center City; 8,000 within walking distance to the Pennsylvania Convention Center; and 3,000 only a half block from the Center.

Lodging selections are diverse in location, style and service. Philadelphia hotels are more than rooms...many of them are architectural treasures, picturesque escapes and innovative alternatives. You can reserve a room in what was once the nation's first international-style skyscraper. Spend the night in a restored 18th-century guest house. Hang your hat in a room overlooking America's "most historic square mile." Or stay in America's first environmentally smart hotel. Select from more than 30 hotel brands and a spectrum of price offerings! You can also choose from numerous campgrounds, youth hostels and apartment-style housing. No matter where you stay, you'll receive Philadelphia's famous friendly service.

For more information about lodging options in Philadelphia and the surrounding area, visit www.pcvb.org.



GOTTA SING, GOTTA DANCE

GREAT PERFORMANCES IN PHILADELPHIA



Opera to rock and roll. Avant-garde to classical. Ballet to modern dance. Jazz to swing. Poetry readings to Broadway musicals. Rockabilly to gospel. Our theaters and performing arts venues offer performances in every key, from artists and performers of every kind.

Some of the world's best-known artists got their start right here in Philadelphia. Names like Boyz II Men, Will Smith, Marian Anderson and hometown resident Patti LaBelle.

Dick Clark's American Bandstand came to life in the 1950s, with the sounds of Frankie Avalon, Fabian and Bobby Rydell. Opera legend Mario Lanza learned to sing on the streets of South Philadelphia

During your visit, reserve a night to hear the world-renowned Philadelphia Orchestra at the magnificent new Kimmel Center for the Performing Arts — or under the stars at the Mann Center during the summer! See the fluid artistry of the Pennsylvania Ballet or Philadanco. Spend an evening with the Philly Pops, the Opera Company of Philadelphia, the Philadelphia Boys Choir or the Philadelphia Chamber Music Society. Whatever the beat of your drummer, you'll find classical, popular and groundbreaking performances in this city brimming with culture.

The Kimmel Center for the Performing Arts



A SHOPPER'S PARADISE



NO SALES TAX ON CLOTHING EVER!

What makes shopping in Philadelphia irresistible? Start with the fact that clothes shopping here is **tax-free** all the time! Plus, we have stores for every interest and every budget available at America's largest retail complex, a huge outlet mall, upscale boutiques, antique shops, off beat and off-the-beaten-track stores, plus the charm of quaint country village shops.

CARE FOR A TOUR? LET'S GO!

Walk along Walnut Street near Rittenhouse Square and feel the pulse of the city with big-name shops such as Nicole Miller, Ralph Lauren and Anthropologie. Don't miss the unique shops on the intersecting side streets such as 16th, 17th and 18th. You're on **Rittenhouse Row**, a great place

to find upscale and trendy clothes and jewelry for adults and kids alike.

Head inside to **The Shops at Liberty Place**, a unique domed mall with an eclectic mix of more than 70 fine shops and an extensive food court.

Brand-name retailers and department stores are found at **The Gallery at Market East**, the nation's biggest indoor city shopping center with more than 170 diverse shops.

Antique lovers can spend the day strolling down Pine Street along historic **Antique Row** or along the charming side streets in New Hope or the Brandywine Valley.

Put jewelry on your agenda and indulge in some elegant diamonds or pearls along **Jewelers' Row**. More than 300 jewelers and designers are located two blocks from Independence Hall in a four-block area.

Savor the aromas and flavors of fresh meats, produce and local and ethnic recipes at the **Italian Market** in South Philadelphia or **Reading Terminal Market** in Center City.





For the look that says “offbeat” and “hip,” stroll down **South Street** and discover everything from punk to funk in more than 200 shops. Shop for shoes to die for, avant-garde clothing or tattoos. A real social melting pot.

Don't miss the eclectic mix of two miles of shops on **Main Street** in **Manayunk**. Designer shops to quaint boutiques offering clothes, hardware (restoration, that is), home furnishings, and more.

The cobblestone streets and small-town charm of **Chestnut Hill** are always a popular destination. You'll see families with strollers, and couples doing some hand-in-hand shopping at 100-plus stores.

Be sure to find time and energy to hit the acres of stores at **Franklin Mills Mall**, the official



landmark of the discount shopper (more than 220 brand-name discount stores under one roof!). Bargains galore at Saks Off Fifth, Nordstrom's Last Call and so many more.

You will find 400 retailers from Tiffany & Co. to FAO Schwartz, at **The King of Prussia Mall**, the largest retail mall in the nation. Enjoy upscale shopping such as DKNY, Versace, Louis Vuitton, Lacoste and Hermés, mixed with eight department stores including Neiman Marcus and Strawbridge's.



If you're ready to take a spin north, there's the 18th-century charm of **Peddler's Village** in Lahaska with over 75 specialty shops and **Penn's Purchase** across the street, offering forty

great outlets at great discounts!

Nestled along the banks of the Delaware River, **New Hope** offers quaint, small-

town shopping including over 200 art galleries, antique shops and boutiques.

SO MANY CUISINES,

Everything you've heard is true!
Philadelphia's restaurants are
an adventure and a delight.
Think of them as gastronomic global
fusion for every budget and every taste.



*World-renowned, internationally acclaimed
four-star French cuisine. Homemade Italian
gnocchi, stuffed calamari, and bowls brimming
with hot, garlicky mussels. Asian fusion.*

Charming country inn dining.

Down-home soul food.

*The freshest fish and classic seafood with
giant lobsters pulled fresh from the tank*

SO MANY DELIGHTS

You could even call the Philadelphia area the United Nations of dining. Pick your favorite ethnic or creative cuisine and you'll find it here: Italian, Moroccan, Indian, Thai, Vietnamese, Greek, French, Latin, Southern, Fusion, Southwestern, Spanish, Japanese, Seafood, good old American, and of course, our famous Chinatown restaurants. From Center City to the countryside, bistros to diners, brasseries to cafes, one thing's for sure, you'll have a dining experience.

WHILE YOU'RE HERE, TASTE SOME OF OUR LOCAL FOOD FAVORITES.

Cheesesteaks: A south Philly favorite. A big helping of grilled, sliced beef served hot on a large, crusty roll. Often topped with cheese or Cheese Whiz and onions (when you place your order and are asked, "with or without?" they're referring to the onions). Just ask a local a bout Pat's, Geno's, Rick's or Jim's, and they'll know exactly what you want to eat.



The first cheesesteak was invented in 1932 by legendary "King of Steaks" Pat Olivieri.

Hoagies: Often referred to by out-of-towners as a sub. A hearty variety of meats, cheese, lettuce and tomato served in an Italian roll. Order it with oil or mayo, your choice.

Water Ice or Italian Ice: A refreshing summer treat that blends ice and flavorings to create a magical combination.



Soft pretzels: Ours look different than the ones you see elsewhere. But boy do they taste great hot from the oven. Don't forget the mustard.

FOR LISTINGS OF PHILADELPHIA'S INCREDIBLE RESTAURANTS, PICK UP A COPY OF THE PHILADELPHIA OFFICIAL VISITORS GUIDE AT THE INDEPENDENCE VISITOR CENTER, 6TH & MARKET STREETS.

THIS CITY CAN PARTY!

SO MUCH NIGHTLIFE, YET SO FEW HOURS.



So put on your dancing shoes or slip into some basic black for a night on the town. There's a nightclub or dance club for just about everyone. Whether it's late-night disco dancing, heartfelt soul, down-home blues or hip-hop, we've got it. Crowds head to the outdoor clubs along the waterfront for live music and DJs spinning tunes.

Check out the retro clubs or after-hours spots where the music never stops. There are famous jazz and blues clubs and cozy spots for folk, country or world music. We have swanky martini, wine and champagne bars. Our pubs serve up the best in local, regional and imported brews. Or have a cigar at one of our sophisticated cigar bars.

Our dinner and dancing clubs set the tone for those in a more romantic mode. There are plenty of after-hours restaurants to grab a late-night bite. (Ask your concierge where the locals hang out). Take in a local comedy show or make it a night out at a dinner theater, Broadway revue, concert or show.

The night is always young in Philadelphia. So get out and enjoy!



First Fridays in Old City: Celebrate the first Friday evening of every month amid the galleries, shops and restaurants in Old City; 5pm-8pm or until you decide to eat.



RELIGIOUS FREEDOM

IN PHILADELPHIA, ALL PEOPLE FOUND RELIGIOUS LIBERTY

Philadelphia contains many well-known symbols of liberty: the Liberty Bell, Independence Hall, and now, the National Liberty Museum. Also worth a visit are the churches and temples that took root in the 17th and 18th centuries, made possible by William Penn's "Holy Experiment" based on religious tolerance for all. Today, many of the original congregations survive and welcome visitors.

Old St. George's Methodist Church: Established in 1767, this church stands as the world's oldest Methodist Church building in continuous service; **235 N. 4th Street.....215-925-7788**

Old First Reformed Church: Established in 1727, it is one of the oldest German Reformed Churches; **151 N. 4th Street215-922-4566**

Mikveh Israel: Constructed in 1782, it is Philadelphia's oldest Jewish Congregation; **44 N. 4th Street.....215-922-5446**

Arch Street Friends Meeting House: Established in 1681, this Quaker meeting house was built to house the men's and women's Yearly Meetings; **320 Arch Street215-627-2667**

Christ Church: Founded in 1695, Christ Church is where many notables worshipped, including George Washington, Benjamin Franklin and Betsy

Ross, along with 15 signers of the Declaration of Independence; **20 N. American Street, 2nd above Market Street215-922-1695**

Old St. Joseph's Catholic Church: Founded by the Jesuits, this congregation is the oldest Catholic Church in Philadelphia; **321 Willings Alley between 3rd and 4th, and Walnut and Spruce Streets215-923-1733**

Old St. Mary's Church: Established by the Jesuits, this congregation was the most important Catholic Church during the American Revolution; **252 S. 4th Street215-923-7930**

Society Hill Synagogue: A small group of Conservative Jews seeking to restore the glory of Center City established this historic house of worship in 1830; **418 Spruce Street 215-922-6590**

Mother Bethel: (See page 25) **419 S. 6th Street, between Pine and Lombard Streets215-925-0616**

Old Pine Street Presbyterian Church: Established in 1768, the Church was organized as the Third Presbyterian Church in Philadelphia; **412 Pine Street215-925-8051**

St. Peter's Church: This colonial Episcopal Church, built in 1758, is one of Philadelphia's most beautiful, and among the best preserved in the nation; **3rd and Pine Streets ..215-925-5968**

REGIONAL MAP



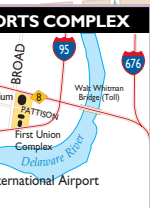
CITY MAP



- | | | | |
|--|------------------|--|--|
| | Hotel | | PHLASH Visitor Bus |
| | Building | | Bus/Trolley Routes |
| | Park | | PATCO |
| | Parking Facility | | Airport Train |
| | Visitor Center | | Market/Frankford, Broad Street, & Subway/Surface Lines |
| | SEPTA Transit | | |

© 1991-2002 PCVB & C.C. Salvatico, Rev. 2/02





- Airport & Sports Complex Key**
1. Comfort Inn Philadelphia Airport
 2. Embassy Suites Philadelphia Airport
 3. Fairfield Inn Philadelphia Airport
 4. Four Points Philadelphia Airport
 5. Hampton Inn Philadelphia Airport
 6. Hilton Philadelphia Airport
 7. Holiday Inn Philadelphia Airport
 8. Holiday Inn Philadelphia Stadium
 9. Microtel Inn and Suites
 10. Philadelphia Airport Marriott
 11. Renaissance Hotel Philadelphia Airport
 12. Sheraton Philadelphia Airport

to **FIRST UNION CENTER AND SPECTRUM, VETERANS STADIUM, AMERICAN SWEDISH HISTORICAL MUSEUM & NATIONAL SHRINE OF ST. RITA OF CASCIA**







PHILADELPHIA

The place that LOVES YOU BACK.™

BUCKS • CHESTER • DELAWARE • MONTGOMERY • PHILADELPHIA COUNTIES

PHILADELPHIA CONVENTION & VISITORS BUREAU

www.pcvb.org

1515 Market Street, Suite 2020
Philadelphia, Pennsylvania 19102
215-636-3300

Photography shot for Greater Philadelphia Tourism Marketing Corp. by Rusty Kennedy, Bob Krist, George Widman and Liz Wuillermin. Other photography provided by Ed Wheeler for the Philadelphia Orchestra, Stephen Barth for the Bucks County Conference & Visitors Bureau, L. Albee for Longwood Gardens, Jane White for the African American Museum in Philadelphia, Carol M. Highsmith for the Pennsylvania Convention Center, Roman Viñoly for The Kimmel Center for the Performing Arts and Melvin Epps for Mother Bethel A.M.E. Church.

PENNSYLVANIA | *memories last a lifetime*®